

# MPS<sup>®</sup>

MOBILE POWER STATION<sup>®</sup>



— ONE PLATFORM. —  
— ENDLESS POSSIBILITIES. —

## MOBILE POWER STATION®: THE FIRST ZERO EMISSION HEAVY DUTY WORK VEHICLE

The American-made Mobile Power Station® (MPS) is a revolutionary, electric work and energy platform providing self-propelled power for emergency response and multi-functional utility for maintenance teams. The platform's greatest asset is its ability to transform into the piece of equipment operators need today. With diverse add-on configurations, the MPS is the first of its kind as a multi-purpose solution for first response and public works.

With increased overall functionality and a low center of gravity, the MPS proves itself as the superior platform for those seeking transformational, reactive power. Boasting features like a **UQM** electric traction motor, an off-grid export power source, and four-wheel drive, the MPS stands in a category of its own.

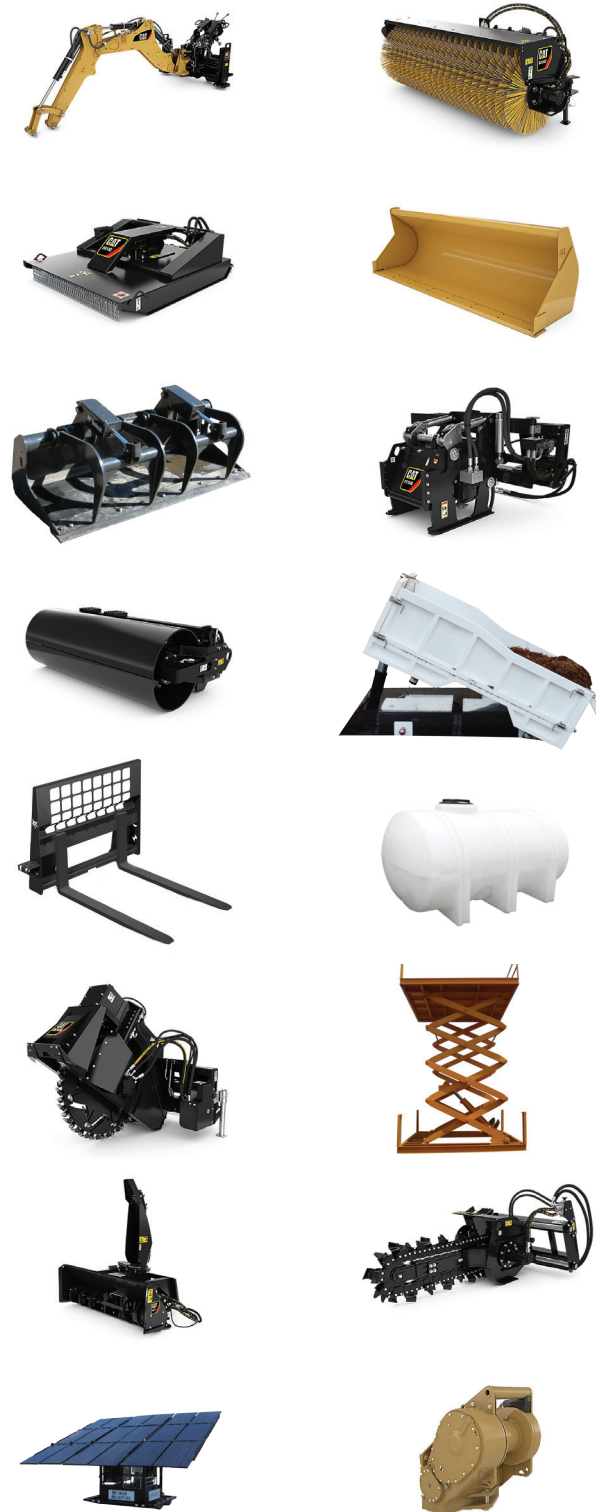
## FULLY CONFIGURABLE: BUILD THE WORKHORSE YOU NEED

The multi-faceted, quiet, energy-efficient workhorse is the missing piece in reducing your maintenance fleet costs, while improving your response capabilities. Customizable with add-ons from its **Parker** mobile hydraulic system, operators have the opportunity to transform this single platform to meet all of their unique needs.

The Mobile Power Station® can provide over 200 kWh of energy storage in its high capacity **BMW** lithium ion battery packs. An optional 60 kW **Cummins** tier four generator can also provide 600 kWh of continuous export power and battery recharging. Never before has a power generator been able to clear its own path to a disaster zone.



## ATTACHMENTS



*\*For your convenience, the Mobile Power Station® is configurable with CAT® and Bobcat® attachments and Type I, II, and III hydraulic tool circuits.*

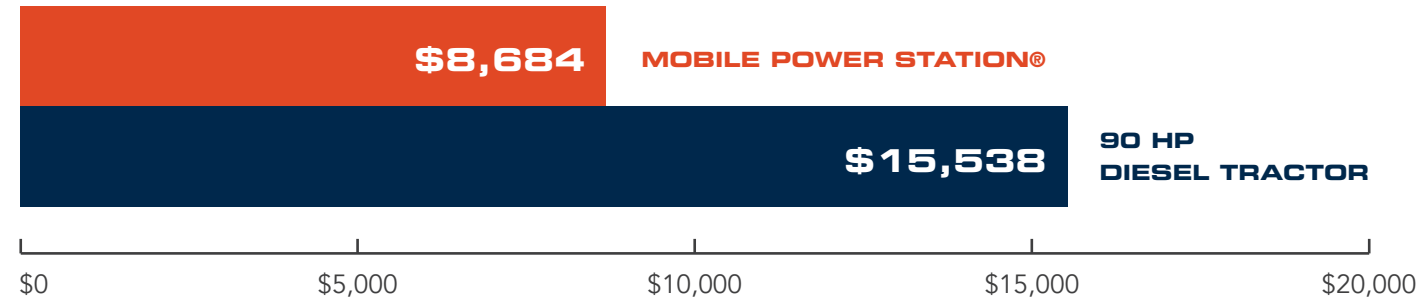
## KEY FEATURES

- Accommodates all CAT® and Bobcat® attachments
- Delivers reliable, off-grid export power
- Recharges electric vehicles and tools
- Operates from safe remote control system
- Optional operator platform or climate-controlled cab
- Can function autonomously
- IP67 submersible
- All-wheel drive, four-wheel coordinated and crab steering
- Electric traction motor provides instant torque and unrivaled power
- Customizable bed with scissor lift, 3-way lift, water storage, etc.
- Configurable front end with lift arms, pallet fork, push bar, etc.
- Towing capacity up to 100,000 pounds
- Robust telematics for remote troubleshooting and tracking

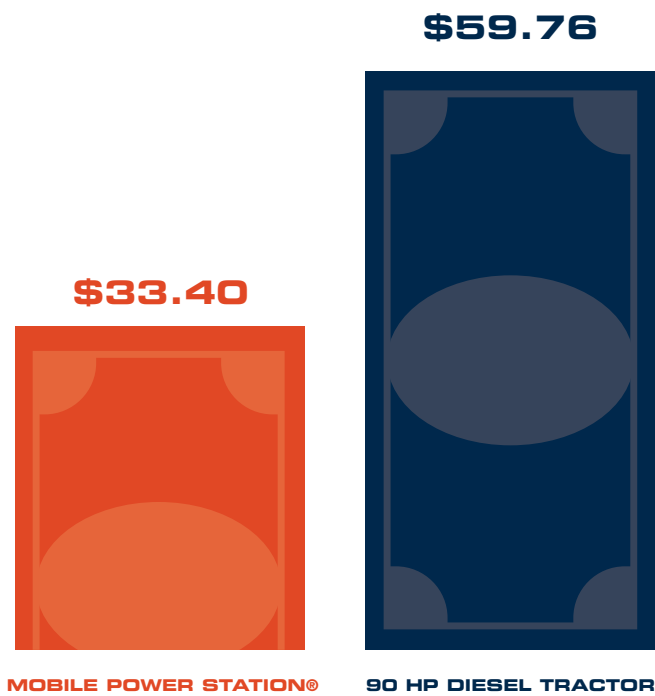
# ELECTRIC WORKHORSE VS. DIESEL: A COST COMPARISON

## OPERATING COSTS PER YEAR

Based on 4.6 hours a day/  
5 days a week/52 weeks



## COST PER DAY



### DATA:

#### Average Diesel Tractor\*\*:

Average diesel cost: \$2.32/gallon  
Diesel Usage: 5.6 gallon/hour  
Average hours/day: 4.6 hours/day  
Average cost/hour: \$12.99/hour

#### Mobile Power Station:

Cost to recharge\*\*\*: \$0.11/kWh  
MPS kWh capacity: 66 kWh  
Average hours/day: 4.6 hours/day  
Average cost/hour: \$7.26/hour

\*\*According to the Nebraska Tractor Test Data (2017)  
\*\*\*According to Electric Choice (electricchoice.com)



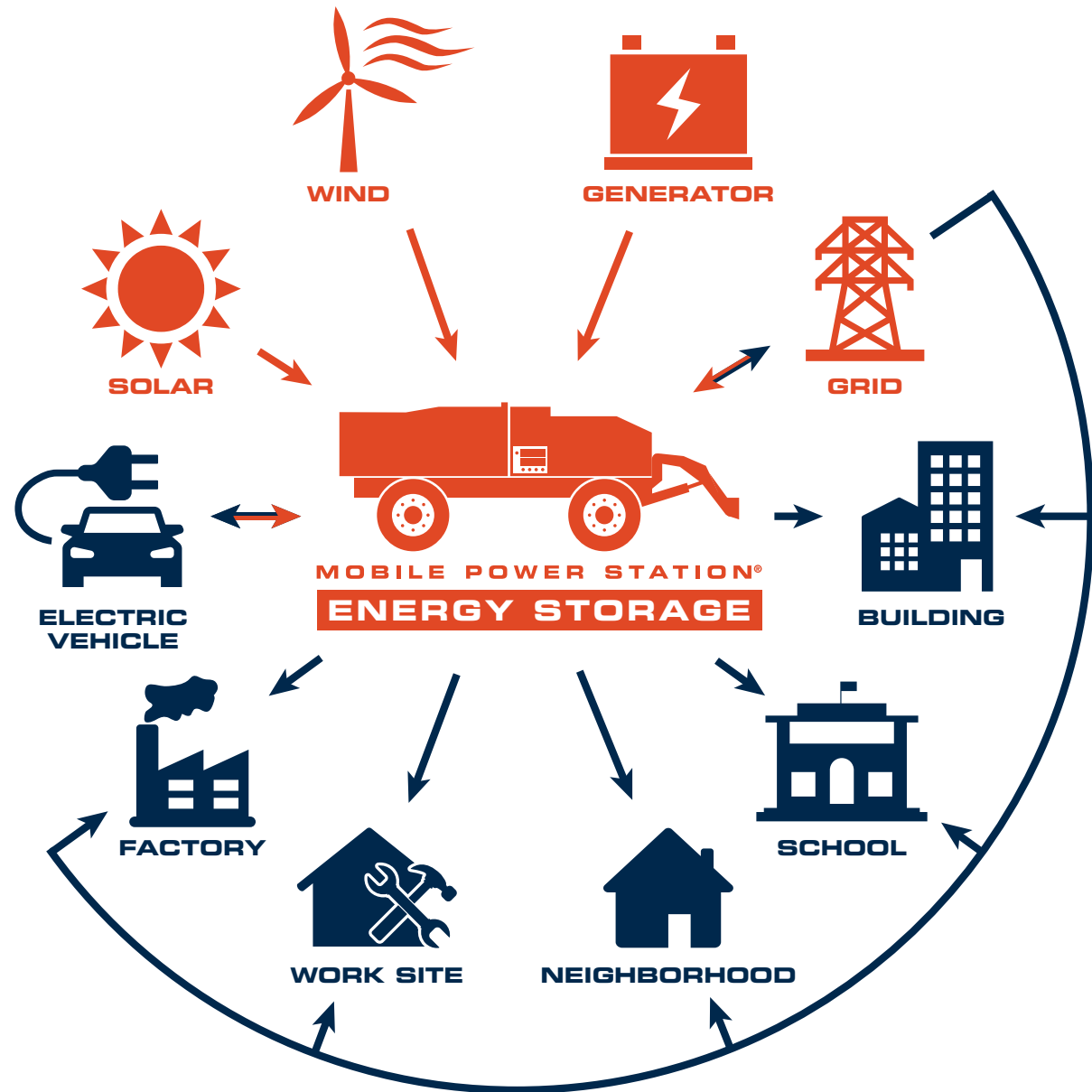
## REVOLUTIONARY



## ELECTRIC POWER PLATFORM



# MOBILE MICROGRID SYSTEM



**UNPRECEDENTED PERFORMANCE**



**MULTI-PURPOSE**



MANUFACTURED BY  
**DANNAR**  
*Power to Transform*

DANNAR is the American Original Equipment Manufacturer (OEM) of the Mobile Power Station®. We're building the workhorse and workforce of the future with this revolutionary, multi-purpose platform. The MPS is the first in a new class of electric work machinery. The MPS provides powerful versatility to work year-round in all areas of infrastructure maintenance, disaster response, and supplemental off-grid export power when needed. Our products are developed with the intention to improve quality of place in every community we touch.

INQUIRIES OR QUESTIONS? 765-216-7191 | [info@dannar.us](mailto:info@dannar.us) | [mobilepowerstation.com](http://mobilepowerstation.com)



# MAINTENANCE + RESPONSE

## OUR PARTNERS

electrified by **BMW i.** 



**CONTACT TO SCHEDULE  
A DEMONSTRATION**

765-216-7191  
info@dannar.us.com  
mobilepowerstation.com

**MPS**<sup>®</sup>  
MOBILE POWER STATION<sup>®</sup>